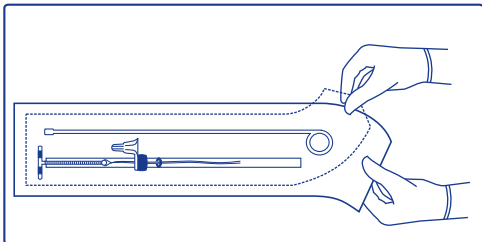
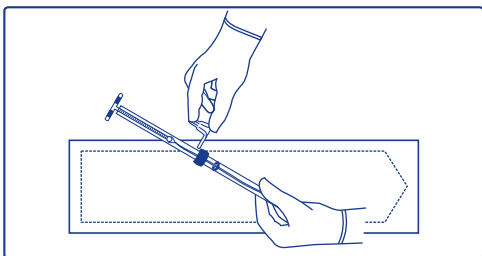


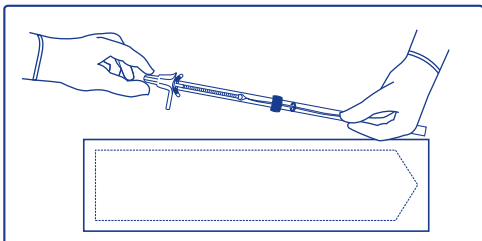
# HOW TO USE SAFE LOAD



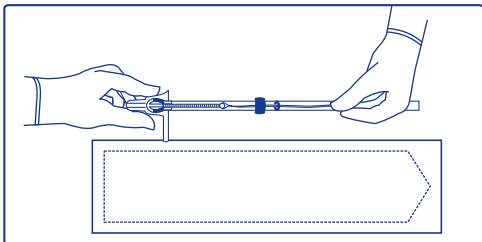
PEEL OPEN THE POUCH OF COPPER T 380A



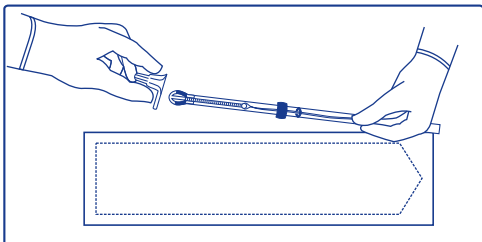
REMOVE THE SAFE LOAD



PUSH THE 'T' INTO THE SAFE LOAD



PRESS THE SAFE LOAD AND INSERT THE HORIZONTAL ARMS IN TO THE INSERTER TUBE



REMOVE THE SAFE LOAD WITH 'T' IN THE TUBE. FOLLOW USUAL PROCEDURE FOR INSERTION

MADE WITH PRIDE IN INDIA

**SMB CORPORATION OF INDIA**

(An ISO 14001:2015 / ISO 13485:2016 Certified Company)

Plot No. 156, GIDC, Umbergaon, Valsad, Gujarat 396 170, INDIA

Mfg. Lic. No. : MFG/MD/2020/000275

Rev. 00, Dtd. 16.06.2021 QA/USL/01